

mdIRSOFT
W971620E1

EZGpsGOLF from mdIRSOF.de
User Manual
For Blackberry and Java enabled Phones

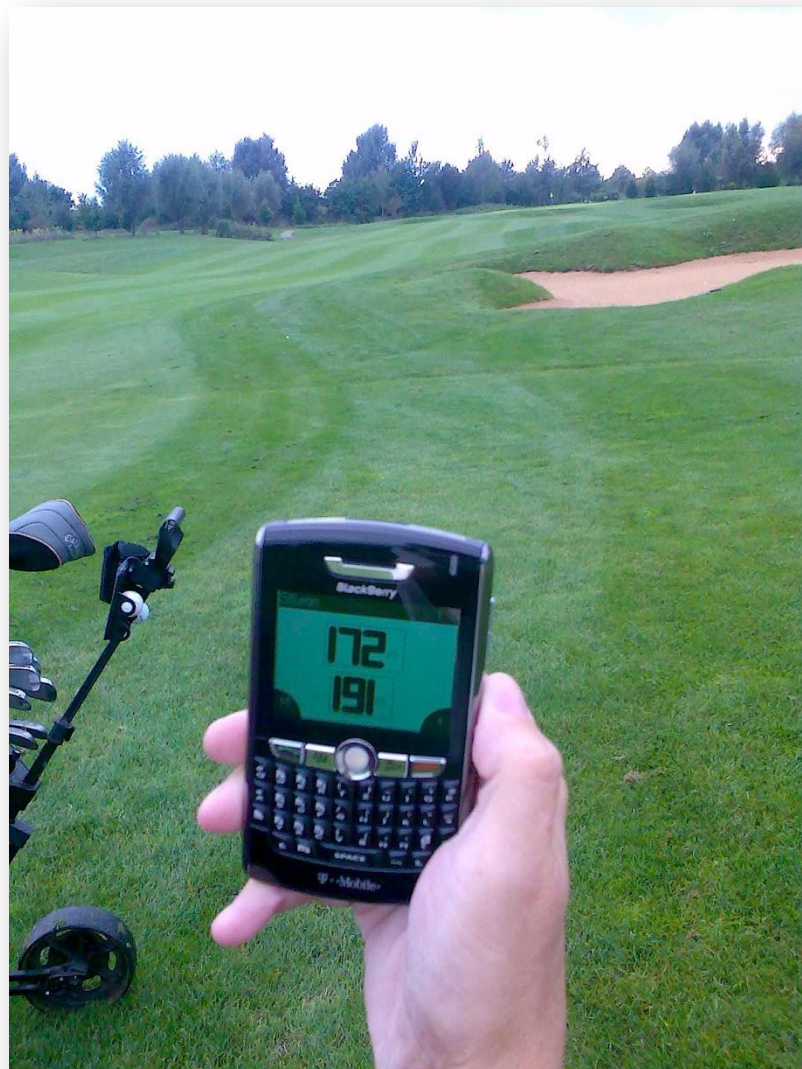


Table of Contents

WHAT IS EZGPSGOLF	3
KEY FEATURES.....	3
SUPPORTED DEVICES	3
REQUIREMENTS FOR JAVA ENABLED PHONES AND BLACKBERRY	4
<i>Java Technology</i>	4
<i>Internet connectivity</i>	4
INSTALLING AND ACTIVATING EZGPSGOLF	4
INSTALLING EZGPSGOLF	ERROR! BOOKMARK NOT DEFINED.
<i>BlackBerry devices</i>	4
<i>Java enabled phones devices</i>	5
DEFINING THE GPS DEVICE TO USE	5
<i>BlackBerry devices</i>	5
<i>Java enabled phones</i>	6
STARTING EZGPSGOLF	7
ACTIVATING EZGPSGOLF	7
USING EZGPSGOLF.....	8
<i>What do I see in the first screen ?</i>	8
<i>How do I update the distances displayed on the screen?</i>	9
WHICH KEYS CAN I USE ?.....	9
<i>BlackBerry Version</i>	9
<i>Java enabled phones</i>	11
PLAYING A DIFFERENT COURSE	11
DOWNLOADING COURSES FROM THE INTERNET.....	12
WHICH COURSE ARE AVAILABLE IN THE INTERNET ?.....	12
HOW DO I CREATE MY OWN COURSE(S)	12
CHANGING SYSTEM SETTINGS FOR EZGPSGOLF	13
<i>How do I change the language ?</i>	13
<i>How do I change the font size?</i>	13
<i>How can I lock the keyboard ?</i>	15
RECOMMENDATIONS FOR BETTER USAGE OF EZGPSGOLF	17
<i>The GPS distance does not seem to be accurate . What can I do to improve it ?</i>	17
HOW DISTANCES ON THE GOLF COURSE ARE MEASURED AND WHY THEY ALWAYS SEEM TO BE WRONG	20
APPENDIX A : INSTALLING ON BLACKBERRY DEVICES.....	23
APPENDIX B : INSTALLING ON NOKIA PHONES	25

What is EZGpsGOLF

With EZ(easy)GpsGOLF you can use your Blackberry or Java enabled phones as a golf range finder.

It uses the a GPS device (internal or external) to calculate and display the distance to the center of the green as well as the distance of your last shot .

Key Features

Key features include:

- EZGpsGolf has been designed with simplicity in mind to minimize the distractions, so that you can concentrate completely on your game.
- Uses a GPS device (internal or external) to calculate the distances
- No need to point to pin to get a distance reading as with laser range finders
- You can create your own courses in 5 minutes using google earth and our website. Perfect when you are playing a new course during holidays.
- Dont't carry an extra device with you. Current range finders are expensive, bulky and cumbersome to use.
- No membership fees
- Support of old phones (only bluetooth is required). Re-use that old phone the you are not using anymore as a rangefinder.

Supported devices

EZGpsGolf is supported for the following devices

BlackBerry GPS enabled phones

- BlackBerry Bold 9000
- BlackBerry Pearl 8110 8130
- BlackBerry Curve 8310 8330
- BlackBerry 8800 8820 8830

Java enabled phones like

- Nokia
- Sony-Ericsson

- Siemens (Benq)
- Other (PDA on Windows Mobile are not supported)

Requirements for Java enabled phones and BlackBerry

Java Technology

- JSR 82 Bluetooth Api
- Bluetooth is used to connect the mobile phone to the external GPS device if the phone does not have one
- MIDP 2.0
- CLDC 1.1
- JSR 179 Location Api (optional) (Used by phones with internal GPS)
- JSR 75 FileConnection and PIM API (optional)

Internet connectivity

Internet connectivity is not mandatory, but it will make life a lot easier.

It is used during installation of the program and for downloading extra golf courses.

Please note that during your golf round no telephone connectivity is required and no additional costs will be involved. All the positioning data is collected from satellites which are freely available.

Installing and activating EZGpsGolf

BlackBerry devices

Just open the browser on your mobile phone and enter
<http://www.mdlRSOFT.de/bb/gpsgolf.jad>

or

download the following file to your PC and install using the Destop Manager

<http://www.mdlRSOFT.de/bb/gpsgolf.zip>

Check „Set applications permissions“ and press download.
Change the Location permissions from Prompt to Allow and save your changes.

The program will be downloaded and installed automatically.

Appendix A shows how this is done for BlackBerry devices.

Java enabled phones devices

For Mobile phones with internal GPS like Nokia N95, Nokia Navigator use

<http://mdlRSOFT.de/nokia/> option with GPS

For mobile phones without internal GPS use

<http://mdlRSOFT.com/nokia/> option without GPS

Follow the instructions on the screen to install the program.

The program will be downloaded and installed automatically.

For the java version you will need to set some permissions of the program

- Set Connectivity to Always allowed or ask first time
- Set Add and Edit Data to Ask every time or allowed
- Set Read user data to Ask every time or allowed
- Please refer to your mobile phone manual for more details.

Appendix B shows how this is done for Nokia Mobile Phones .

Defining the GPS device to use

Before you starting using EZGpsGolf make sure the GPS device is connected and a satellite fix has been acquired.

BlackBerry devices

You can check the GPS device under the following option

Options -> Advanced options -> GPS

There you should refresh the GPS position before starting EZGpsGolf.

This might take a few seconds or minutes depending on when you last used the device. Make sure you do not perform this step inside of a building or in any place with bad GPS reception.

If you want to use an external Bluetooth GPS device you first have to pair it via Bluetooth (password usually 0000) and then define it as the default GPS device

Options -> Advanced options -> GPS

For more information please refer to your BlackBerry manual.

Java enabled phones

For mobile phones with internal GPS

Please refresh the GPS position before starting EZGpsGolf.

This might take a few seconds or minutes depending on when you last used the device. Make sure you do not perform this step inside of a building or in any place with bad GPS reception.

For some Nokia phones this can be done under

Tools (or System)-> Gps Data -> Position

If you want to use an external Bluetooth GPS device you first have to pair it via Bluetooth (password usually 0000) and then define it as the default GPS device.

For some Nokia phones this can be done under

Tool -> Settings -> General -> Positioning -> Positioning methods

For more information please refer to your Nokia or other mobile phone manual.

For mobile phones without internal GPS

For mobile phones without GPS you need an external bluetooth device.

The prices for these devices have dropped dramatically and you can get a very good quality device for under 35 Euro.

You need to do the following

- Pair the phone with the Bluetooth GPS device (password usually 0000)
- Define the Bluetooth device in EZGpsGolf under Menu -> Setup -> Setup GPS -> Find GPS

Wait until the GPS device appears on the screen and click on it to confirm. The mobile phone will now start looking for a valid GPS signal.

Starting EZGpsGolf

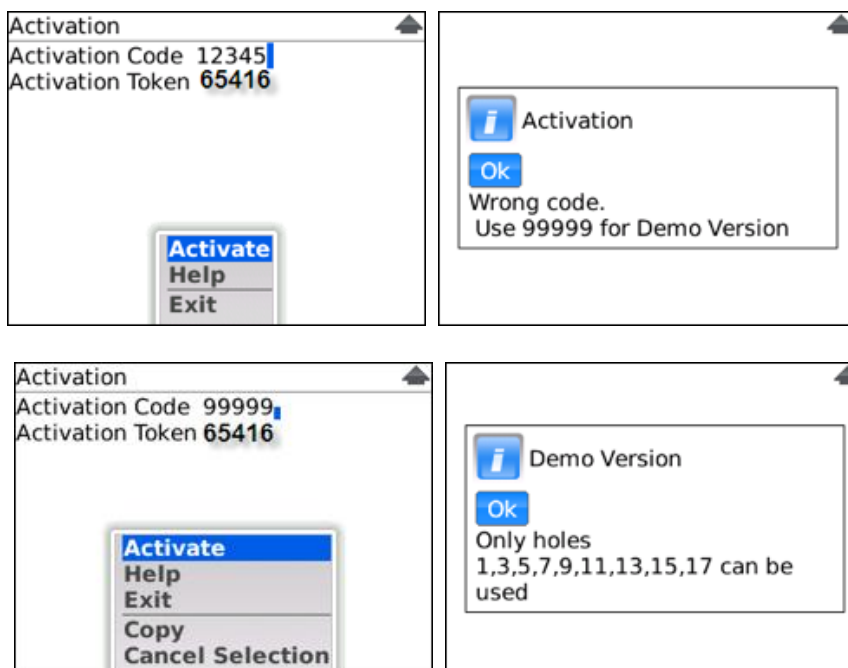
Click on the Golfer Icon to start EZGPSGolf.

For Java enabled phones it might be under Games or Programs depending on your mobile phone

Activating EZGpsGolf

When you start EZGpsGolf for the first time you will have to enter an activation code.

If you don't have one you can enter 99999 , which will allow you to use the demo mode. In Demo mode you can only play the uneven holes (1,3,5,7...etc). The demo mode only allows you to use 1 extra course downloaded from the internet.



For an activation code please email us at mdlrSOFT@email.de with your contact details and the Activation Token displayed on the screen.

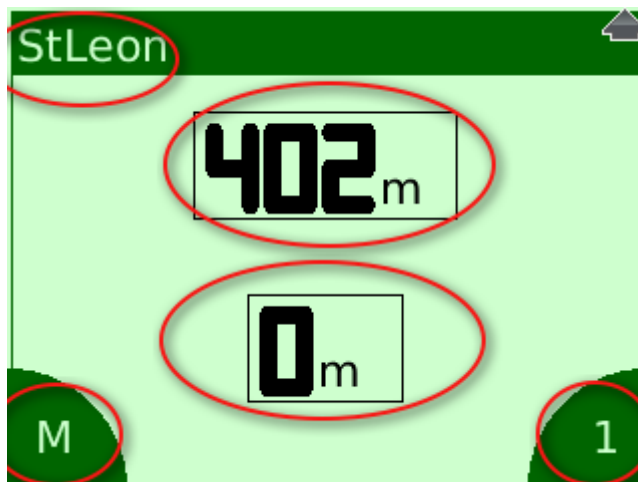
Using EZGpsGolf

What do I see in the first screen ?

Every time you start the program it will display hole number one at the course St Leon.

The following information is displayed on the screen(from top left to bottom right)

- Course Name (St Leon)
- Distance to the center of the green (402 meters) to hole 1
- Distance since last measurement reset (0 meters)
- Indicator the where the measurements where done (Front/Mid/Back/Pin)
- Right corner will be
- Black = no signal
- Yellow acquiring Signal,
- Hole number Number 1 : GPS ok, ready to start



If the GPS status is yellow and moving (lower right corner) just wait until the turns green.

If the status is green, you're ready to go.

If the status is black it means that the program has not been able to locate the GPS device.

Check if the GPS device is active or for external GPS devices if it has been paired correctly and also if it has been defined correctly in EZGpsGolf.

How do I update the distances displayed on the screen?

As you move towards the hole the distances are updated automatically. You don't have to press a single button.

Just walk to your ball, get the BlackBerry out of the holster and read the distance to the hole.

Which keys can I use ?

BlackBerry Version

- Press the trackball to call up the main menu.
- Sliding the trackball up and down will scroll through the menu options.
- Press the trackball to confirm your selection
- Q selects the next Hole
- P selects the previous hole
- SPACE or 0 resets the distance marker to zero
- Trackball press followed by the * key will lock(unlock) the keyboard







Java enabled phones

- Press the middle navigation button to call up the main menu and select options
- Select the right upper button to return when inside a menu
- Press the key above and below the middle navigation button to scroll through the menu options.
- Press the key on upper right side to go to the next hole
- Press the key on the upper left to reset the distance marker
- Middle navigation followed by the * key will lock (unlock) the keyboard

Playing a different course

Select the Main menu -> Play course -> Rot or St Leon to play those courses.

If you have downloaded additional courses to your phone you have to use Main Menu -> Play Course -> File and select the course that you downloaded from the internet.

Downloading courses from the internet

Courses can be downloaded from our website from <http://mdlrsoft.de/bb/> for BlackBerry or <http://mdlrsoft.de/nokia> for Nokia devices.

You find the course by entering the club Id. A list of available courses can be found here : <http://mdlrsoft.de/courses> .

The courses are displayed on the screen and you can be downloaded to your BlackBerry or PC.

The courses are then loaded via the program by selecting Menu, Play Course, File. There you have to select the file that you have previously imported from the web.

You can also create your own course. See the section below for more information.

The courses StLeon and Rot which always come included with the program are measured to **the middle of the green** !

Which course are available in the internet ?

A list of all available courses for download can be found under <http://mdlrsoft.de/courses> .

How do I create my own course(s)

You can also create your own courses. A detailed description can be found under <http://mdlrsoft.de/courses/create.html> .

Basically it consists of 4 steps

- Create a list of placemarks using maps.google.com or google earth. Each placemark represents the position of the hole
- Export the placemarks
- Generate valid course data out of the exported file using our website
- A course id will be generated that you can now import as described in „How can I load a different course from the internet ?“.

Changing system settings for EZGPsGolf

How do I change the language ?

Use Main Menu -> Setup -> Setup display -> Language to switch between English and German.

(Please note that not all the texts have been translated into German.)

How do I change the font size?

Select # key (alt # in some models) repeatedly to increase the size of the displayed text until it suits your needs.





How can I lock the keyboard ?

There is a keylock function available to avoid accidentally hitting any button while putting the phone away.

Select the Trackball followed by the * button to lock the keyboard. Use the same to unlock the keyboard again.





Recommendations for better usage of EZGpsGolf

The GPS distance does not seem to be accurate . What can I do to improve it ?

- Don't put the phone inside your golf bag or into you pockets. The GPS device needs a clear sight to the sky to work properly
 - Attach the phone to the outside of your golf bag to have better reception





- start the program at least 10 minutes before going to the first tee so that the device has to to acquire a GPS fix (technical lingo for finding the position)
- don't use the program inside buildings or where you might have bad GPS reception

Finally, if none of the above has worked, the problem might be the accuracy of the integrated GPS device.

If it is only accurate to +/- 10 meters, that might be good enough for navigation usage , but definitively not for golfing.

In that case you should purchase an external bluetooth Gps device (cost 25-35 euro on bEay) .

Blackberry phones have system setting where you can select which Gps device it

should use.(internal or bluetooth). Please refer to your manual for more information.

How are distances on the golf course

(And why they always seem to be wrong)

Many golf courses have the distance to the front , center and back of the green printed on the sprinkle covers along the fairway.

When you read the distance to the center of the green on the cover (let's say 100m) you assume that you are in fact 100 meters away from the center of the green.

Right ?

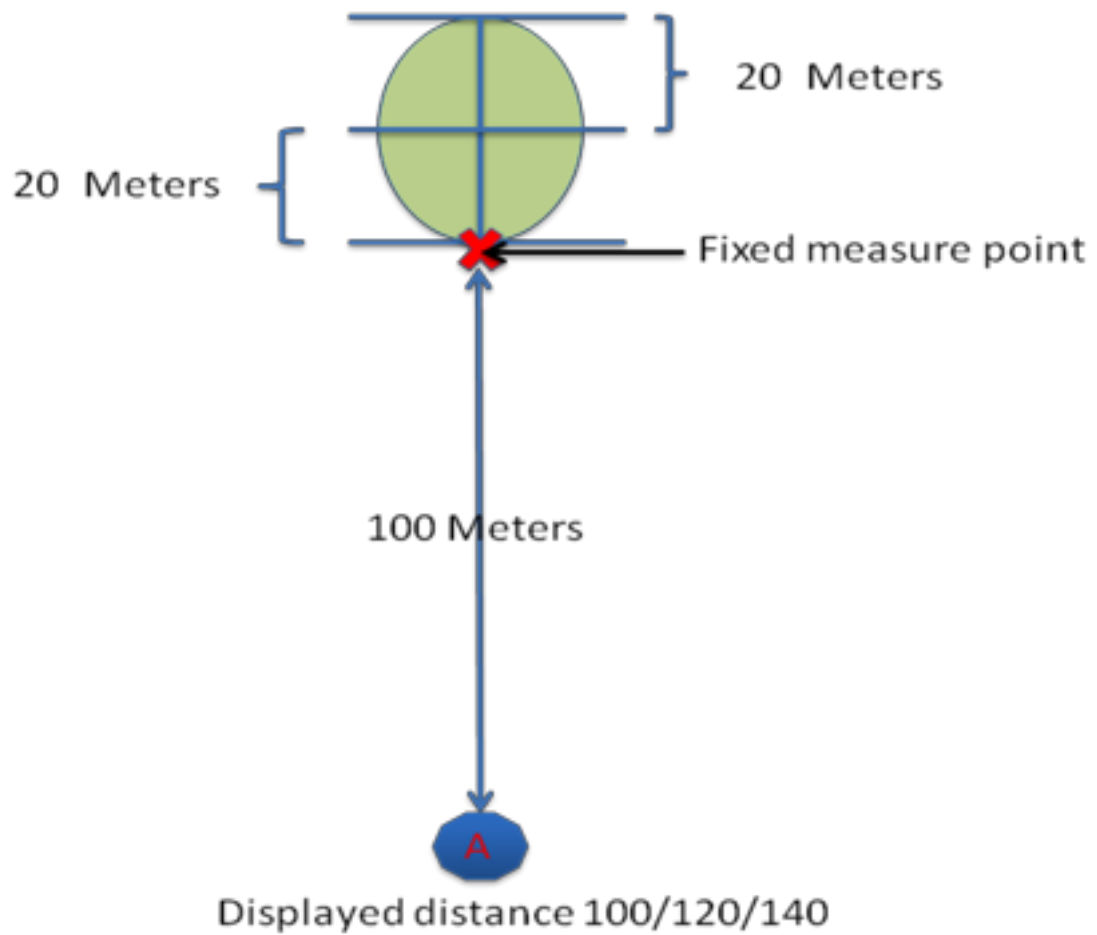
WRONG !!

In the golf course all measurements refer to a fixed point on the beginning of the green. From this point all other measurements are calculated.

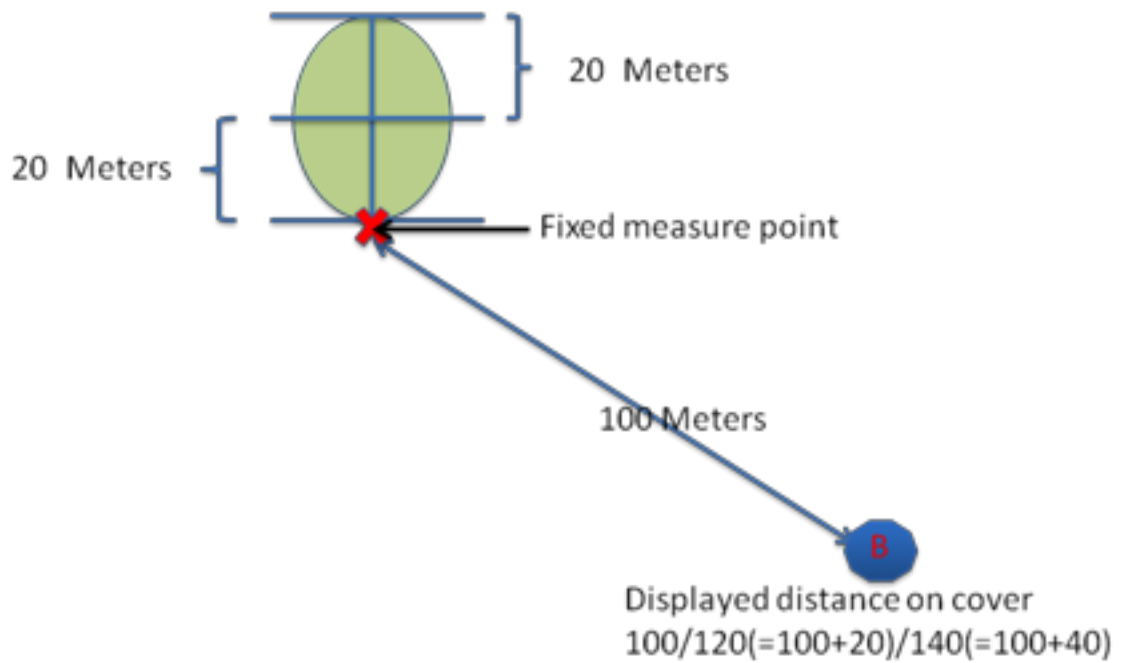
Let's make an example to understand what I mean :

In this example we have a green which is 40 m deep . The red cross is the measuring point (always on the front of the green)

A player standing on position A will see a reading of 100/120/140 on the cover. The measurements are ok in this particular case.

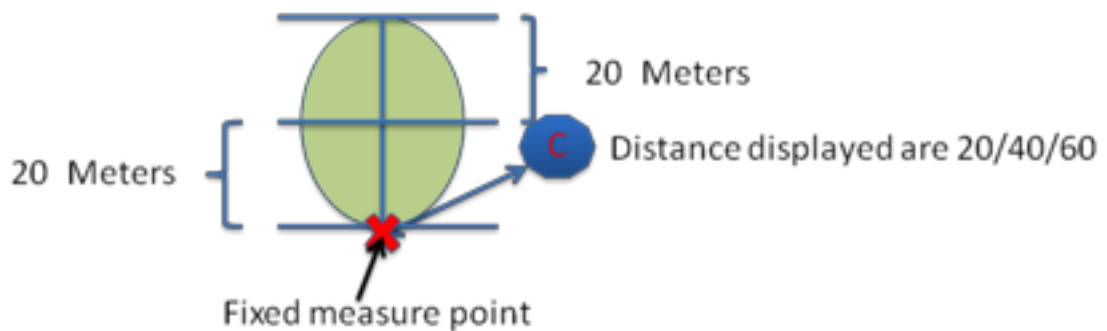


Now let's assume the player is right of the fairway at position B . The player is still 100 meters away from the fixed measure point , however the displayed distances are still 100/120/140, even though it's clear that the distances to the middle and the back of the green should be smaller.



Let's look at an extreme example to better understand how measurements are done. In this case the player is on position C, right of the green and 20 meters away from the fixed measure point.


The displayed distances on the cover would be 20/40/60, although you can clearly see that the player is less than 20 meters away from the center of the green.



Appendix A : Installing on Blackberry devices



Change the Location permissions from Prompt to Allow and save your changes.

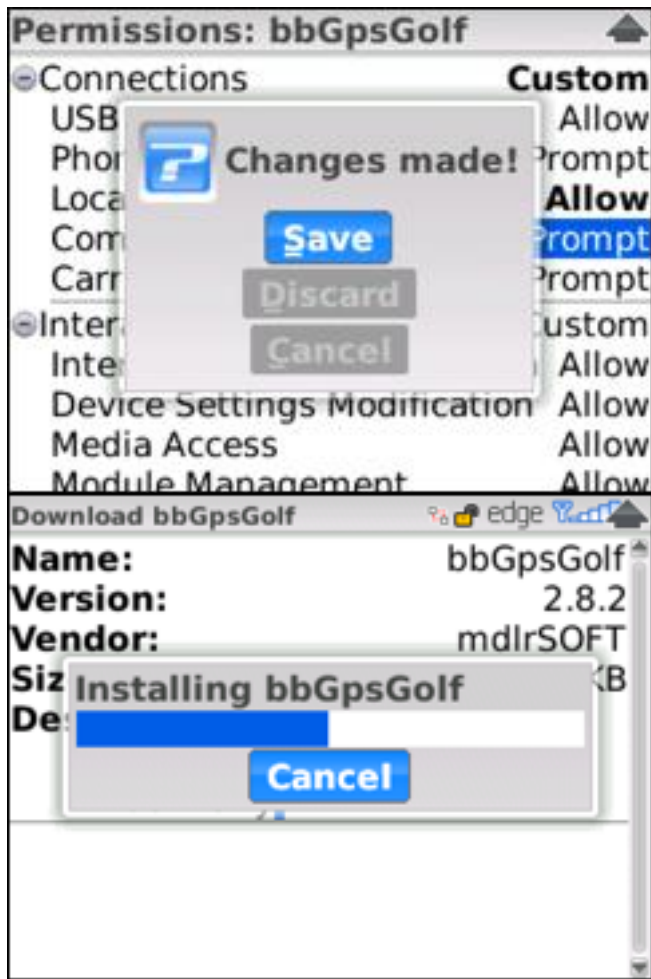


bbGpsGolf is requesting changes to its application control permissions.

[View](#)

Permissions: bbGpsGolf

	Custom
Connections	
USB	Allow
Phone	Prompt
Location (GPS)	Allow
Company Network	Prompt
Carrier Internet	Deny
Interactions	Prompt
Interprocess Communication	Allow
Device Settings Modification	Allow
Media Access	Allow
Module Management	Allow



Appendix B : Installing on Nokia phones

